

› DUST-FREE WORKING

FESTOOL ECCENTRIC SANDER ROTEX RO 150 FEQ-PLUS

WITH MULTI-JETSTREAM 2 AND FESTOOL DUST EXTRACTOR CTL 36 E AC HD



Festool eccentric sander ROTEX RO 150 FEQ-Plus and patented MULTI-JETSTREAM 2 (or equivalent)

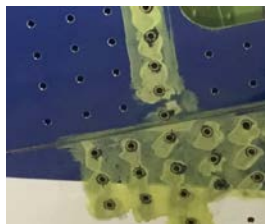


Festool dust extractor CTL 36 E AC HD with SC FIS-CT 36/5 SELFCLEAN filter bag 3.5 m Ø 27-32 mm hose (or equivalent)

FESTOOL

More information is available on www.festool.com

Responsible use: 8 hours per 8-hour working day sanding alloyed steel (stainless steel) (limit value hexavalent chrome)



alloyed steel (stainless steel) coated surface

PREMIUM "STATE OF THE ART"
- Exposure Chromium-6 less than 0,5 µg/m³

Reference: current exposure limit value Chromium-6 1 µg/m³

Condition : flat use sander

Recommended: additioneel use P3 dust filter

› CONTACT

For details on the use of this label and its interpretation refer to the TNO website below:

DUSTFREEWORKING.TNO.NL

TNO
Bakemastraat 97K
2628 VK Delft
Postbus 49
2600 AA Delft

T 088 866 33 24
E wegwijzer@tno.nl



TNO innovation
for life