

# DUST-FREE WORKING

## FESTOOL ECCENTRIC SANDER ROTEX RO 150 FEQ-PLUS

WITH MULTI-JETSTREAM 2 AND FESTOOL DUST EXTRACTOR CTL 36 E AC HD



Festool eccentric sander ROTEX RO 150 FEQ-Plus and patented MULTI-JETSTREAM 2 (or equivalent)

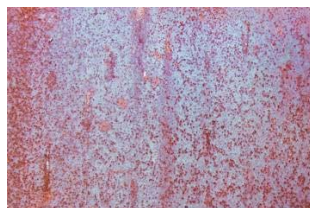


Festool dust extractor CTL 36 E AC HD with SC FIS-CT 36/5 SELFCLEAN filter bag 3.5 m Ø 27-32 mm hose (or equivalent)

## FESTOOL

More information is available on [www.festool.com](http://www.festool.com)

Responsible use: 8 hours per 8-hour working day sanding unalloyed steel (limit value welding fumes)



unalloyed steel

**PREMIUM "STATE OF THE ART"**  
- Exposure Welding fumes less than 0,01 mg/m<sup>3</sup>

Reference: current exposure limit value Welding fumes 1 mg/m<sup>3</sup>

## CONTACT

For details on the use of this label and its interpretation refer to the TNO website below:

**DUSTFREEWORKING.TNO.NL**

TNO  
Bakemastraat 97K  
2628 VK Delft  
Postbus 49  
2600 AA Delft

T 088 866 33 24  
E [wegwijzer@tno.nl](mailto:wegwijzer@tno.nl)



**TNO** innovation  
for life